



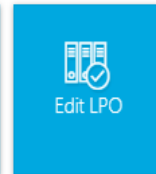
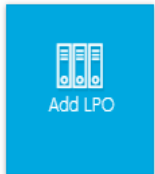
**ASTRON**  
ENERGY

# Use of Technology

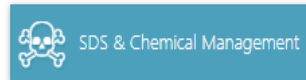
5 October 2021

## Supervisor

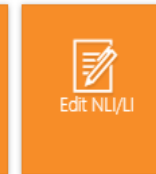
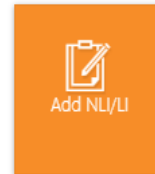
### LPO



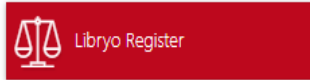
### SDS & Chemical Management



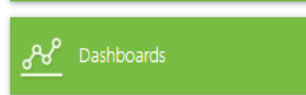
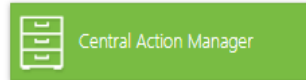
### NLI/LI



### Register



### Monitoring



### JLA



### Selected Users Only



Stewardship Report

QR and V&V

NLI/LI

LPO

Central Actions

Central Findings

Meeting Manager

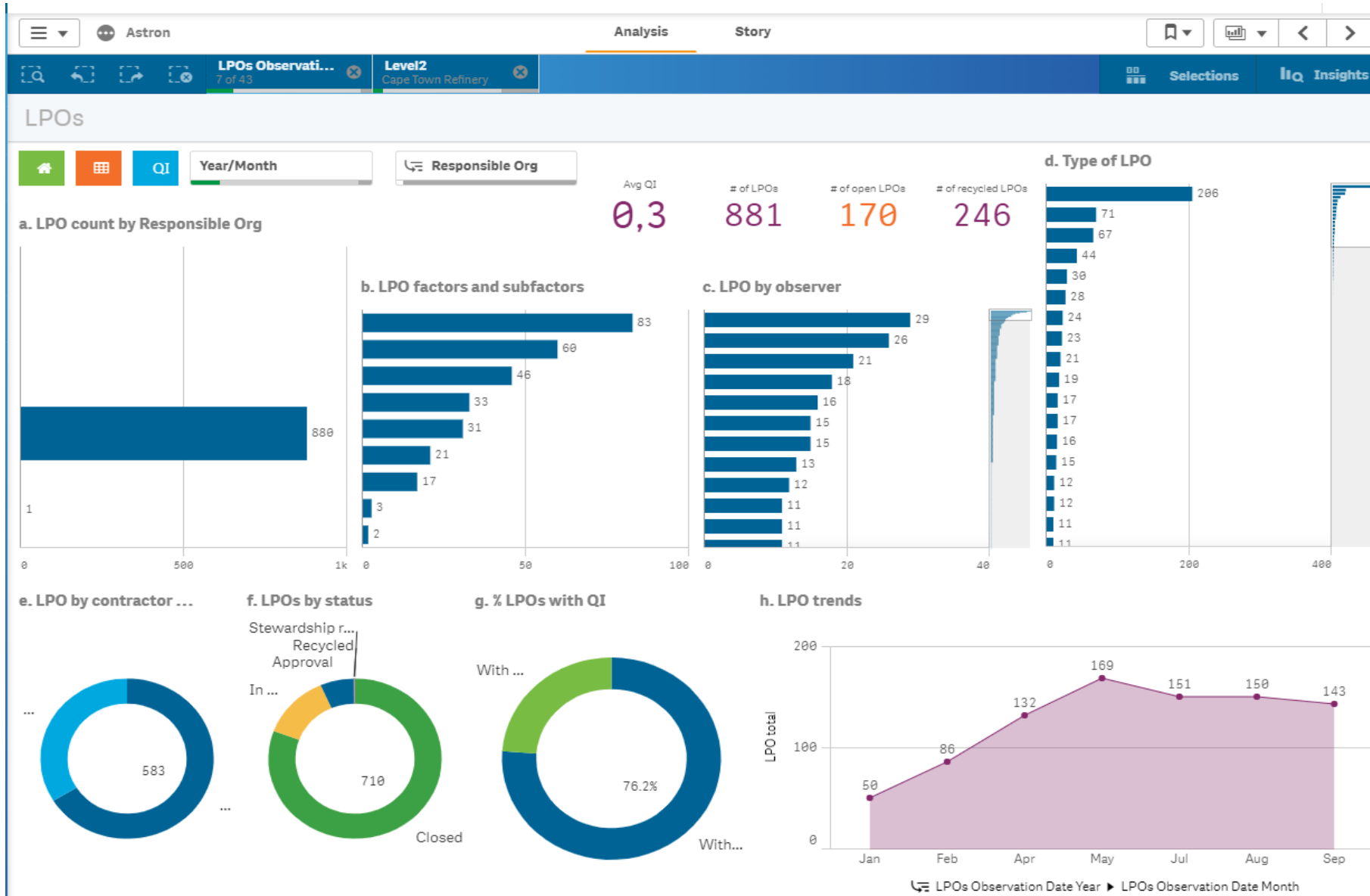
Contractors

Stakeholders

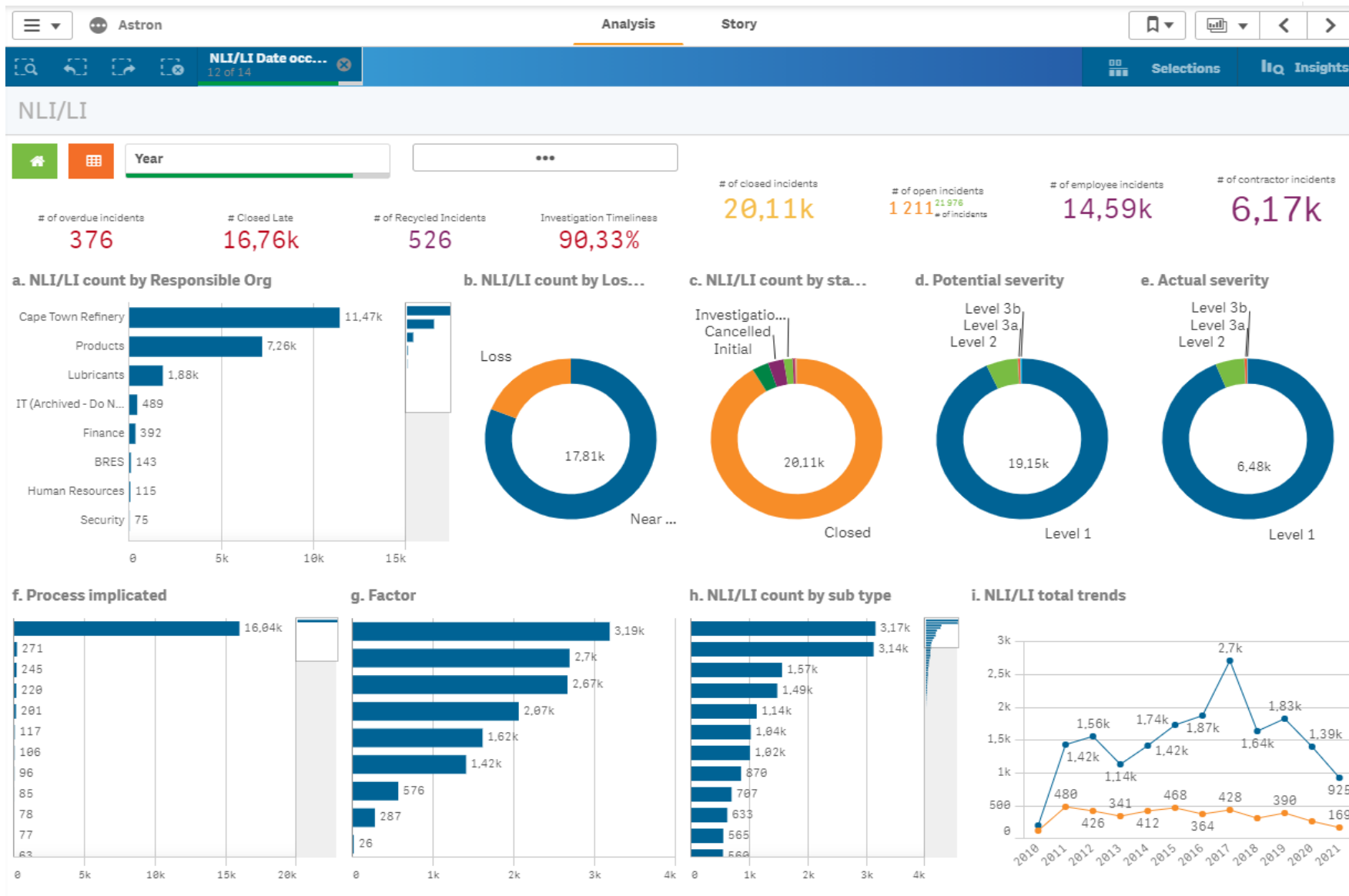
Engagements

Emergency Preparedness

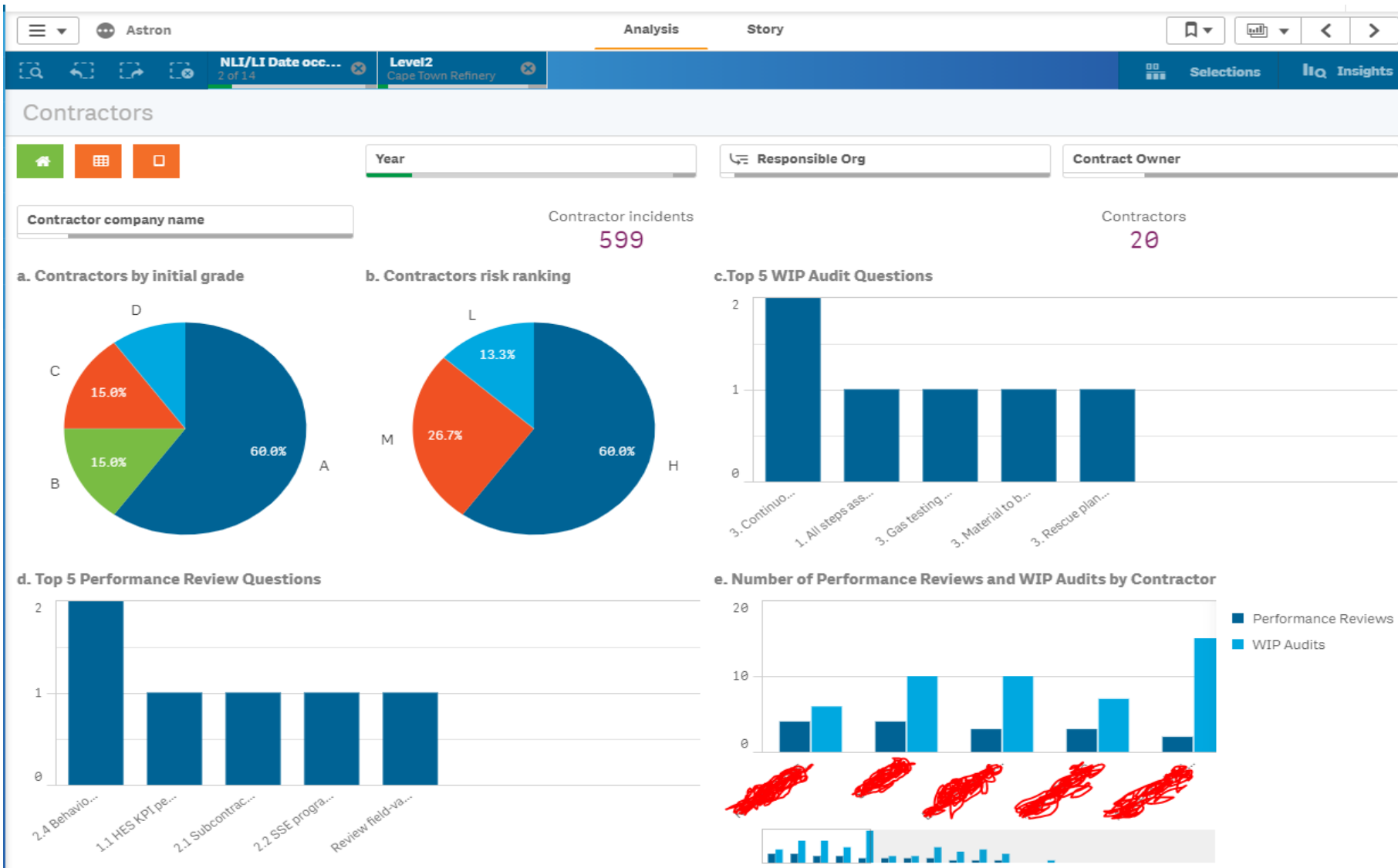
# Loss Prevention Observation



# Near Loss Incidents and Loss Incidents (NLI /LI)



# Contractor Health Environment & Safety Management



# Opportunities

- Purchasing intrinsically safe tablets to be able to capture inspections, field walk about, audits immediately while on site and upload onto the system.